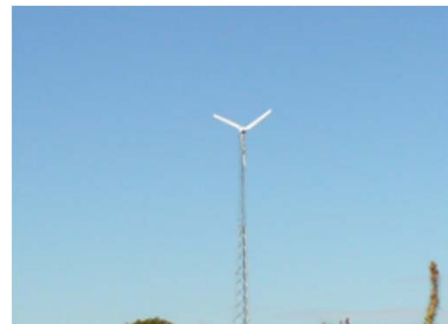


Wind Turbine (Model No. EGE-WT-20KW)



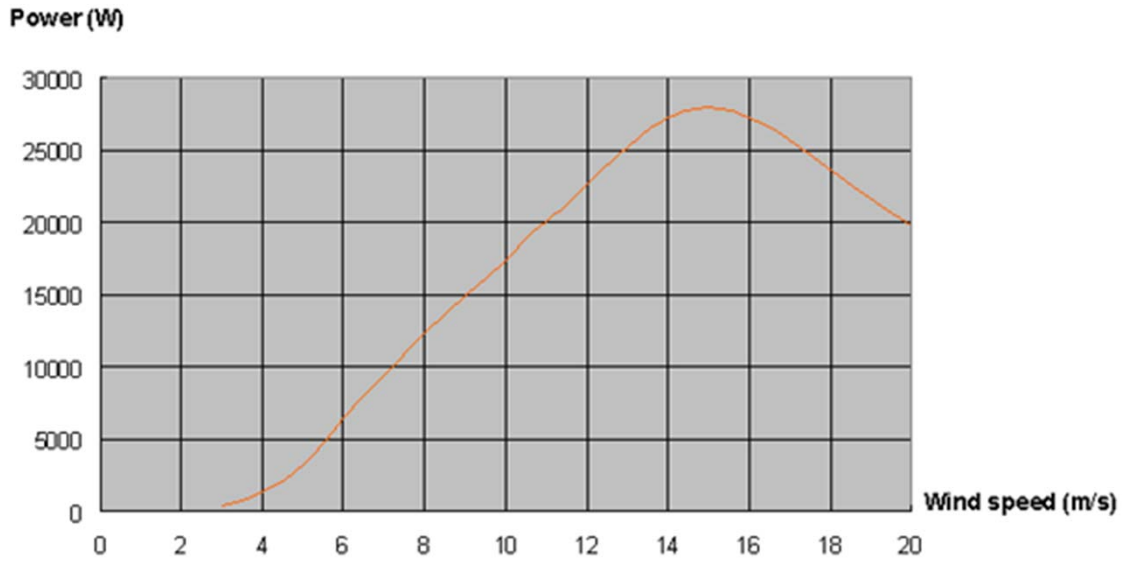
Specifications

Items	Parameters
Rated power (W)	20000
Maximum output power (W)	28000
Battery bank voltage (VDC)	240
Cut-in wind speed (m/s)	3
Rated wind speed (m/s)	11.5
Working wind speed (m/s)	3-25
Survival wind speed (m/s)	50
Generator efficiency	>0.87
Wind energy utilizing ratio (Cp)	0.4
Generator type	Permanent Magnet Alternator
Generator weight (kg)	496
Blade material/quantity	GRP/3
Blade diameter (m)	Φ9.0
Over speed control	Yawing + Electromagnetic brake / Hydraulic brake (optional)
Shutting down method	Manual + Automatic

Wind Turbine (Model No. EGE-WT-20KW)



Power Curve



Installed Units

Esavior 20KW wind turbine can be applied in both the on-grid system and the off-grid system.

