

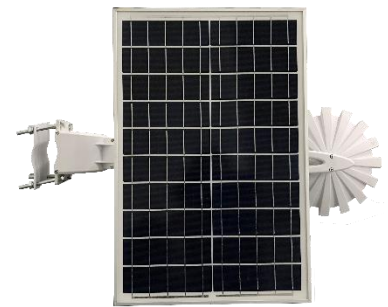
Sunflower

Using the latest Solar and LED technologies, our powerful LED Solar Garden/Wall light offers exceptional lighting with substantial energy savings, reduced maintenance costs and carbon emissions.

Ideal for lining pathways and accenting garden features, once installed the lights charge up during the day and light up automatically at night for all night over or your required hours.

KEY FEATURES & ADVANTAGES

- ✓ **15,00 LM** max lamp lumen high brightness
- ✓ **100,000+ Hours** long LED lifespan, with professional heat dissipation design
- ✓ **25 Years** long product lifespan
- ✓ **3,000+ Cycles** life LiFePO4 batteries with inbuilt Micro-BMS technologies
- ✓ **5+ Days** cloudy/rainy days autonomy
- ✓ **Flexible & Customized Working Modes** with timer and motion sensor by programming
- ✓ **Adaptable Brackets** for either post or wall mounting.



MAIN APPLICATIONS

- Resort, villa and house garden
- Gate post
- Security areas
- Park Lot
- Public spaces
- Exterior retail, commercial, hotel and leisure environments.



TECHNICAL SPECIFICATIONS

LED Light Source	Rated Power	15W (15W COBx1 module)
	LED Brand	OSRAM COB (LED Lumen: 180lm/W)
	Lumens(LM)	1350-1500lm
	Life-span	100,000 hours
	Color Temp. (CCT)	6000K (2700~6500K Full range available)
	CRI	>80
	Viewing Angle	360° uniform light intensity distribution
Solar Panel	Power	5V/25Wp (High Efficiency Poly PV)
	Life-span	25 years
Batteries	Capacity/Type	3.2V/40AH (128WH) / LiFePO4 Lithium
	Life-span	8+ years (3000 circles @60% DoD)
Controller	Type	PWM Solar Charge Controller
	Sensor	PIR (Timing as optional)
Full Charge Time	By Solar	5 hours (STC: 1000W/m ² , 25°C)
Discharge Time	Dim Mode	>70 hours
	Bright Mode	>14 hours
Working Temp.	-30°C ~+80°C	
Mounting Height/Brackets	3~5 m/ Clamp Bracket adaptable for pole or wall mounting	
Space Between Lights	12~15m	
Materials	Aluminium Alloy	
Certificate	CE / ROHS / IP66/ IK08/ TÜV-SUD ISO9001/ ISO14001	
Warranty	1 years	

PACKING INFORMATION

Items	Package	L (mm)	W (mm)	H (mm)	CBM	G.W. (kgs)
Light Body & Brackets	1set per Carton	820	285	240	0.056	5.70
Solar Panel	1pcs per Carton	560	360	40	0.008	2.3
PCS/40'HQ Container:	1000 pcs	PCS/20' Container		420 pcs		