

LED FLOOD LIGHT (BKB Series)

TECHNICAL SPECIFICATIONS

(Model EGE-FLD-100W-BKB)



KEY FEATURES:

- ★ 12,000LM Lamp Lumen (Lamp Lumen Efficiency>120LM/W)
- ★ 60,000+ Hours Lifespan; Lumen Decrease<3%
- ★ CRI>70, with Excellent Color Rendition
- ★ Die Casting Aluminum Casing with unique design; Perfect Heat Elimination
- ★ IP65 Waterproof Rank and Anti-corrosion Casing with Electrophoretic Surface Treatment Secured Long Lifespan under Severe Environment.
- ★ Surge Protection: L/N-PE: 6kV, L-N 4kV
- ★ 5 Years Manufacturer Warranty.

TECHNICAL DATASHEET

<i>Rated Power:</i>	100W
<i>Lamp Lumen:</i>	12,000 LM
<i>Working Frequency:</i>	50~60Hz
<i>Nos of LEDs:</i>	100 pcs
<i>Color Temp:</i>	4500~5000K
<i>IP Rank:</i>	IP65
<i>Environment Temp.:</i>	-30~+60°C
<i>Lifespan:</i>	60,000 hrs

<i>Input Volatage:</i>	AC85-265V
<i>Lamp Lumen Eff.:</i>	120LM/W
<i>Power Factor (PF):</i>	>0.95
<i>Number of Modules:</i>	50LEDsx2modules
<i>CRI (Ra):</i>	>70
<i>LED Chips:</i>	PHILIPS LUMILEDS 3030
<i>LED Driver:</i>	MEANWELL/ SONSEN
<i>Warranty:</i>	5 Years

PACKING INFORMATION (1pcs per carton):

<i>Product Size:</i>	160*330*145mm
<i>Net Weight:</i>	2.6 kgs
<i>PCS per 20':</i>	2460 CTN

<i>Carton Size:</i>	200*340*150mm
<i>Gross Weight:</i>	3.2 kgs
<i>PCS per 40'HQ:</i>	6270 CTN

APPLICATIONS:

- ★ Street/ Road lighting
- ★ Tunnel lighting
- ★ High mast for square & open space lighting
- ★ High/Express Way lighting
- ★ Large park lot lighting

LED FLOOD LIGHT (BKB Series)

TECHNICAL SPECIFICATIONS

(Model EGE-FLD-150W-BKB)



KEY FEATURES:

- ★ 18,000LM Lamp Lumen (Lamp Lumen Efficiency>120LM/W)
- ★ 60,000+ Hours Lifespan; Lumen Decrease<3%
- ★ CRI>70, with Excellent Color Rendition
- ★ Die Casting Aluminum Casing with unique design; Perfect Heat Elimination
- ★ IP65 Waterproof Rank and Anti-corrosion Casing with Electrophoretic Surface Treatment Secured Long Lifespan under Severe Environment.
- ★ Surge Protection: L/N-PE: 6kV, L-N 4kV
- ★ 5 Years Manufacturer Warranty.

TECHNICAL DATASHEET

<i>Rated Power:</i>	150W
<i>Lamp Lumen:</i>	18,000 LM
<i>Working Frequency:</i>	50~60Hz
<i>Nos of LEDs:</i>	150 pcs
<i>Color Temp:</i>	4500~5000K
<i>IP Rank:</i>	IP65
<i>Environment Temp.:</i>	-30~+60°C
<i>Lifespan:</i>	60,000 hrs

<i>Input Volatage:</i>	AC85-265V
<i>Lamp Lumen Eff.:</i>	120LM/W
<i>Power Factor (PF):</i>	>0.95
<i>Number of Modules:</i>	50LEDsx3modules
<i>CRI (Ra):</i>	>70
<i>LED Chips:</i>	PHILIPS LUMILEDS 3030
<i>LED Driver:</i>	MEANWELL/ SONSEN
<i>Warranty:</i>	5 Years

PACKING INFORMATION (1pcs per carton):

<i>Product Size:</i>	240*330*145mm
<i>Net Weight:</i>	3.3 kgs
<i>PCS per 20':</i>	1890 CTN

<i>Carton Size:</i>	280*340*150mm
<i>Gross Weight:</i>	3.9 kgs
<i>PCS per 40'HQ:</i>	4480 CTN

APPLICATIONS:

- ★ Street/ Road lighting
- ★ Tunnel lighting
- ★ High mast for square & open space lighting
- ★ High/Express Way lighting
- ★ Large park lot lighting

LED FLOOD LIGHT (BKB Series)

TECHNICAL SPECIFICATIONS

(Model EGE-FLD-200W-BKB)



KEY FEATURES:

- ★ 24,000LM Lamp Lumen (Lamp Lumen Efficiency>120LM/W)
- ★ 60,000+ Hours Lifespan; Lumen Decrease<3%
- ★ CRI>70, with Excellent Color Rendition
- ★ Die Casting Aluminum Casing with unique design; Perfect Heat Elimination
- ★ IP65 Waterproof Rank and Anti-corrosion Casing with Electrophoretic Surface Treatment Secured Long Lifespan under Severe Environment.
- ★ Surge Protection: L/N-PE: 6kV, L-N 4kV
- ★ 5 Years Manufacturer Warranty.

TECHNICAL DATASHEET

Rated Power:	200W	Input Volatage:	AC85-265V
Lamp Lumen:	24,000 LM	Lamp Lumen Eff.:	120LM/W
Woring Frequency:	50~60Hz	Power Factor (PF):	>0.95
Nos of LEDs:	200 pcs	Number of Modules:	50LEDsx4modules
Color Temp:	4500~5000K	CRI (Ra):	>70
IP Rank:	IP65	LED Chips:	PHILIPS LUMILEDS 3030
Environment Temp.:	-30~+60°C	LED Driver:	MEANWELL/ SONSEN
Lifespan:	60,000 hrs	Warranty:	5 Years

PACKING INFORMATION (1pcs per carton):

Product Size:	320*330*145 mm	Carton Size:	360*340*150mm
Net Weight:	3.8 kgs	Gross Weight:	4.8 kgs
PCS per 20':	1470 CTN	PCS per 40'HQ:	3480 CTN

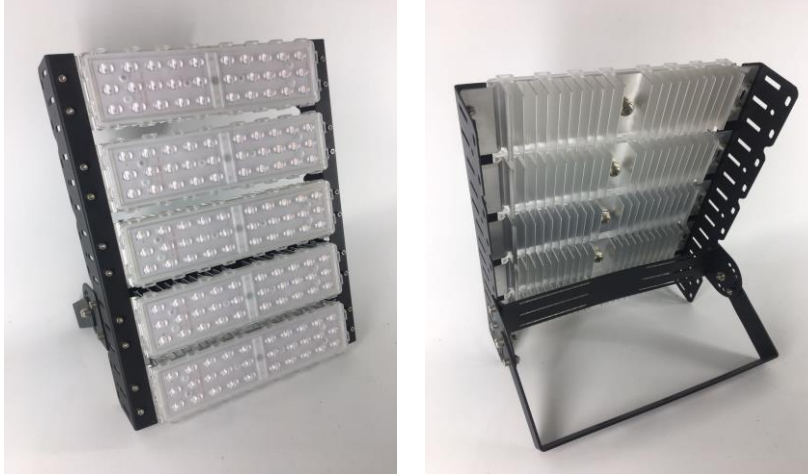
APPICATIONS:

- ★ Street/ Road lighting
- ★ Tunnel lighting
- ★ High mast for square & open space lighting
- ★ High/Express Way lighting
- ★ Large park lot lighting

LED FLOOD LIGHT (BKB Series)

TECHNICAL SPECIFICATIONS

(Model EGE-FLD-250W-BKB)



KEY FEATURES:

- ★ 30,000LM Lamp Lumen (Lamp Lumen Efficiency>120LM/W)
- ★ 60,000+ Hours Lifespan; Lumen Decrease<3%
- ★ CRI>70, with Excellent Color Rendition
- ★ Die Casting Aluminum Casing with unique design; Perfect Heat Elimination
- ★ IP65 Waterproof Rank and Anti-corrosion Casing with Electrophoretic Surface Treatment Secured Long Lifespan under Severe Environment.
- ★ Surge Protection: L/N-PE: 6kV, L-N 4kV
- ★ 5 Years Manufacturer Warranty.

TECHNICAL DATASHEET

Rated Power:	250W	Input Volatage:	AC85-265V
Lamp Lumen:	30,000 LM	Lamp Lumen Eff.:	120LM/W
Woring Frequency:	50~60Hz	Power Factor (PF):	>0.95
Nos of LEDs:	250 pcs	Number of Modules:	50LEDsx5 modules
Color Temp:	4500~5000K	CRI (Ra):	>70
IP Rank:	IP65	LED Chips:	PHILIPS LUMILEDS 3030
Environment Temp.:	-30~+60°C	LED Driver:	MEANWELL/ SONSEN
Lifespan:	60,000 hrs	Warranty:	5 Years

PACKING INFORMATION (1pcs per carton):

Product Size:	400*330*145 mm	Carton Size:	440*340*150mm
Net Weight:	4.5 kgs	Gross Weight:	5.5 kgs
PCS per 20':	1200 CTN	PCS per 40'HQ:	2850 CTN

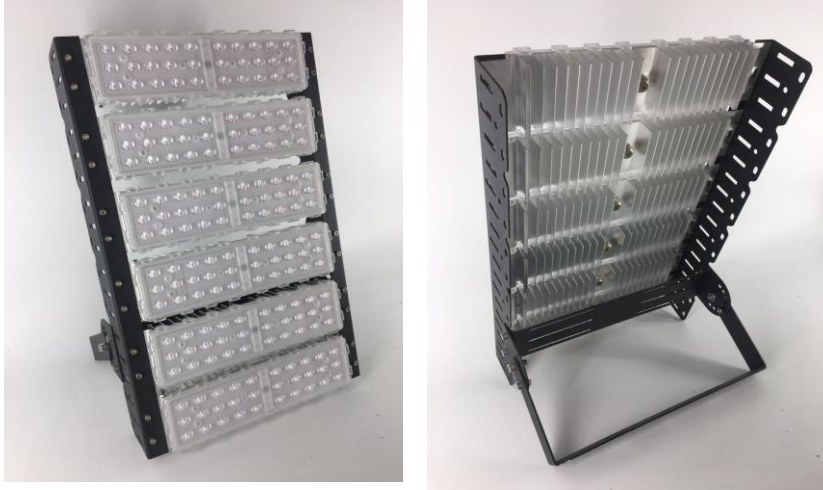
APPICATIONS:

- ★ Street/ Road lighting
- ★ Tunnel lighting
- ★ High mast for square & open space lighting
- ★ High/Express Way lighting
- ★ Large park lot lighting

LED FLOOD LIGHT (BKB Series)

TECHNICAL SPECIFICATIONS

(Model EGE-FLD-300W-BKB)



KEY FEATURES:

- ★ 36,000LM Lamp Lumen (Lamp Lumen Efficiency>120LM/W)
- ★ 60,000+ Hours Lifespan; Lumen Decrease<3%
- ★ CRI>70, with Excellent Color Rendition
- ★ Die Casting Aluminum Casing with unique design; Perfect Heat Elimination
- ★ IP65 Waterproof Rank and Anti-corrosion Casing with Electrophoretic Surface Treatment Secured Long Lifespan under Severe Environment.
- ★ Surge Protection: L/N-PE: 6kV, L-N 4kV
- ★ 5 Years Manufacturer Warranty.

TECHNICAL DATASHEET

Rated Power:	300W	Input Volatage:	AC85-265V
Lamp Lumen:	36,000 LM	Lamp Lumen Eff.:	120LM/W
Woring Frequency:	50~60Hz	Power Factor (PF):	>0.95
Nos of LEDs:	300 pcs	Number of Modules:	50LEDsx6 modules
Color Temp:	4500~5000K	CRI (Ra):	>70
IP Rank:	IP65	LED Chips:	PHILIPS LUMILEDS 3030
Environment Temp.:	-30~+60°C	LED Driver:	MEANWELL/ SONSEN
Lifespan:	60,000 hrs	Warranty:	5 Years

PACKING INFORMATION (1pcs per carton):

Product Size:	480*330*145 mm	Carton Size:	520*340*150mm
Net Weight:	5.2 kgs	Gross Weight:	6.2 kgs
PCS per 20':	1020 CTN	PCS per 40'HQ:	2400 CTN

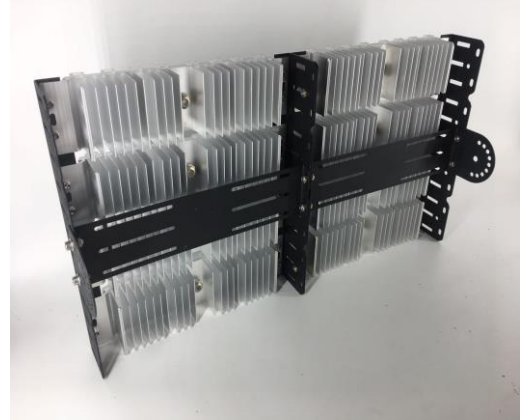
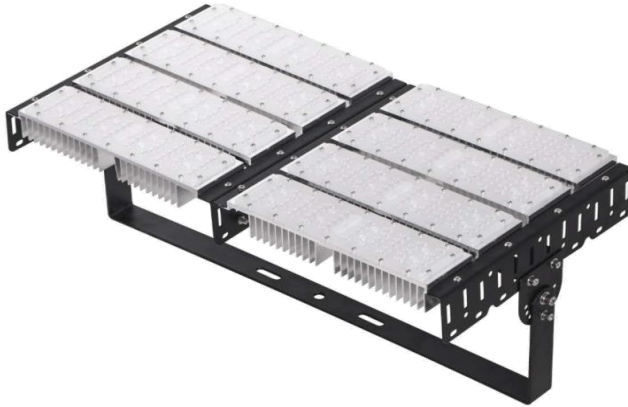
APPICATIONS:

- ★ Street/ Road lighting
- ★ Tunnel lighting
- ★ High mast for square & open space lighting
- ★ High/Express Way lighting
- ★ Large park lot lighting

LED FLOOD LIGHT (BKB Series)

TECHNICAL SPECIFICATIONS

(Model EGE-FLD-400W-BKB)



KEY FEATURES:

- ★ 48,000LM Lamp Lumen (Lamp Lumen Efficiency>120LM/W)
- ★ 60,000+ Hours Lifespan; Lumen Decrease<3%
- ★ CRI>70, with Excellent Color Rendition
- ★ Die Casting Aluminum Casing with unique design; Perfect Heat Elimination
- ★ IP65 Waterproof Rank and Anti-corrosion Casing with Electrophoretic Surface Treatment Secured Long Lifespan under Severe Environment.
- ★ Surge Protection: L/N-PE: 6kV, L-N 4kV
- ★ 5 Years Manufacturer Warranty.

TECHNICAL DATASHEET

Rated Power:	400W	Input Volatage:	AC85-265V
Lamp Lumen:	48,000 LM	Lamp Lumen Eff.:	120LM/W
Woring Frequency:	50~60Hz	Power Factor (PF):	>0.95
Nos of LEDs:	400 pcs	Number of Modules:	50LEDsx8 modules
Color Temp:	4500~5000K	CRI (Ra):	>70
IP Rank:	IP65	LED Chips:	PHILIPS LUMILEDS 3030
Environment Temp.:	-30~+60°C	LED Driver:	MEANWELL/ SONSEN
Lifespan:	60,000 hrs	Warranty:	5 Years

PACKING INFORMATION (1pcs per carton):

Product Size:	320*650*145 mm	Carton Size:	360*660*150mm
Net Weight:	7.2 kgs	Gross Weight:	8.2 kgs
PCS per 20':	760 CTN	PCS per 40'HQ:	1800 CTN

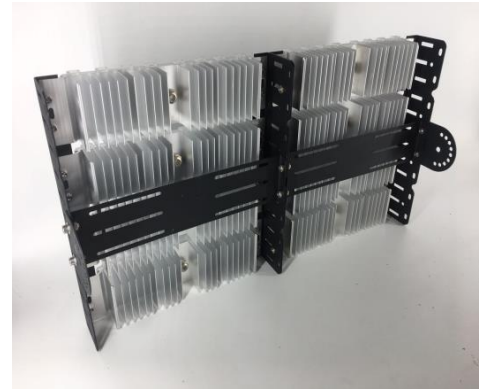
APPICATIONS:

- ★ Street/ Road lighting
- ★ Tunnel lighting
- ★ High mast for square & open space lighting
- ★ High/Express Way lighting
- ★ Large park lot lighting

LED FLOOD LIGHT (BKB Series)

TECHNICAL SPECIFICATIONS

(Model EGE-FLD-500W-BKB)



KEY FEATURES:

- ★ 60,000LM Lamp Lumen (Lamp Lumen Efficiency>120LM/W)
- ★ 60,000+ Hours Lifespan; Lumen Decrease<3%
- ★ CRI>70, with Excellent Color Rendition
- ★ Die Casting Aluminum Casing with unique design; Perfect Heat Elimination
- ★ IP65 Waterproof Rank and Anti-corrosion Casing with Electrophoretic Surface Treatment Secured Long Lifespan under Severe Environment.
- ★ Surge Protection: L/N-PE: 6kV, L-N 4kV
- ★ 5 Years Manufacturer Warranty.

TECHNICAL DATASHEET

Rated Power:	500W	Input Volatage:	AC85-265V
Lamp Lumen:	60,000 LM	Lamp Lumen Eff.:	120LM/W
Woring Frequency:	50~60Hz	Power Factor (PF):	>0.95
Nos of LEDs:	500 pcs	Number of Modules:	50LEDsx10 modules
Color Temp:	4500~5000K	CRI (Ra):	>70
IP Rank:	IP65	LED Chips:	PHILIPS LUMILEDS 3030
Environment Temp.:	-30~+60°C	LED Driver:	MEANWELL/ SONSEN
Lifespan:	60,000 hrs	Warranty:	5 Years

PACKING INFORMATION (1pcs per carton):

Product Size:	400*650*145 mm	Carton Size:	440*660*150mm
Net Weight:	8.4 kgs	Gross Weight:	9.4 kgs
PCS per 20':	620 CTN	PCS per 40'HQ:	1460 CTN

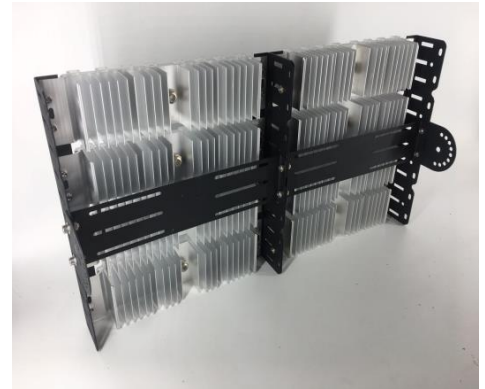
APPICATIONS:

- ★ Street/ Road lighting
- ★ Tunnel lighting
- ★ High mast for square & open space lighting
- ★ High/Express Way lighting
- ★ Large park lot lighting

LED FLOOD LIGHT (BKB Series)

TECHNICAL SPECIFICATIONS

(Model EGE-FLD-600W-BKB)



KEY FEATURES:

- ★ 72,000LM Lamp Lumen (Lamp Lumen Efficiency>120LM/W)
- ★ 60,000+ Hours Lifespan; Lumen Decrease<3%
- ★ CRI>70, with Excellent Color Rendition
- ★ Die Casting Aluminum Casing with unique design; Perfect Heat Elimination
- ★ IP65 Waterproof Rank and Anti-corrosion Casing with Electrophoretic Surface Treatment Secured Long Lifespan under Severe Environment.
- ★ Surge Protection: L/N-PE: 6kV, L-N 4kV
- ★ 5 Years Manufacturer Warranty.

TECHNICAL DATASHEET

Rated Power:	600W	Input Volatage:	AC85-265V
Lamp Lumen:	72,000 LM	Lamp Lumen Eff.:	120LM/W
Woring Frequency:	50~60Hz	Power Factor (PF):	>0.95
Nos of LEDs:	600 pcs	Number of Modules:	50LEDsx12 modules
Color Temp:	4500~5000K	CRI (Ra):	>70
IP Rank:	IP65	LED Chips:	PHILIPS LUMILEDS 3030
Environment Temp.:	-30~+60°C	LED Driver:	MEANWELL/ SONSEN
Lifespan:	60,000 hrs	Warranty:	5 Years

PACKING INFORMATION (1pcs per carton):

Product Size:	480*650*145 mm	Carton Size:	520*660*150mm
Net Weight:	9.4 kgs	Gross Weight:	10.4 kgs
PCS per 20':	520 CTN	PCS per 40'HQ:	1240 CTN

APPICATIONS:

- ★ Street/ Road lighting
- ★ Tunnel lighting
- ★ High mast for square & open space lighting
- ★ High/Express Way lighting
- ★ Large park lot lighting